

# Panasonic

ideas for life

electronic board

UB-5315 UB-5815 UB-7325

## Panaboard™



### Improves your Presentations and meetings

#### Panaboard UB-5315, UB-5815, UB-7325

- Our range of Panaboards are built with an integral printer for easy-operation.
- Plain paper printing with multiple copies
- Panaboard can work as a PC printer
- Panaboard can be controlled from PC
- Panaboard helps to keep audience attention and increases participation
- Panaboard increases efficiency and reduces meeting time
- Panaboard can be wall-mounted or used with optional floor stand
- Panaboard provides multi-copies, logic control and PC interface

Microsoft®  
Windows® 98,  
Windows® Me,  
Windows® 2000,  
Windows® XP  
operating systems

USB 1.1

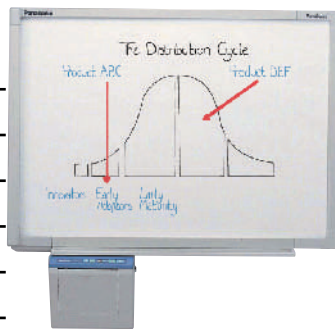
# Panaboard™

Improves your Presentations and Meetings



## Used for

- Seminars
- Meetings
- Brain Storming
- Scheduling
- Training
- Copying charts and graphs

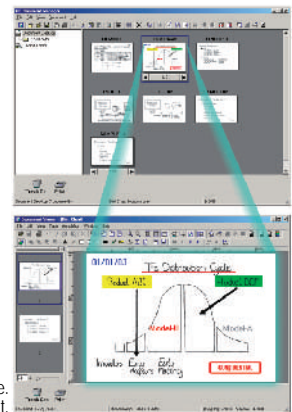


## PC Interface

### Document Management System

Panaboard UB-5315, UB-5815 and UB-7325 comes with utility software that consists of Document Manager and Document Viewer. The meeting contents on the Panaboard screen will become meeting minutes with some annotation by Document Viewer function. The Document Manager makes it easy to file and distribute the meeting minutes quite easily. Supported saving file format is BMP, TIFF, JPG, PNG and PDF.

The scanned image is monochrome. The annotation function is used to make the coloured text.



### TWAIN Driver

With just one click, you can scan the image on the Panaboard screen as image data to your computer. You can also control the Panaboard right from your computer.

### Printer Driver

The Panaboard can work as a PC printer. During a meeting, if you need to print documents, the Plug & Play USB port makes it easy to print out documents right from the Panaboard.

General	Model number	UB-5315	UB-5815	UB-7325
Power Supply		AC 100 - 120 V, 50/60 Hz or AC 220 - 240 V, 50/60 Hz		
Power Consumption		Operational 1.40 A (AC 100 - 120 V) or 0.75 A (AC 220 - 240 V) Standby .18 A (AC 100 - 120 V) or 0.08 A (AC 220 - 240 V)		
Dimensions (H x W x D) (without stand)		55" x 61" x 9.05"	55" x 75.3" x 9.05"	55" x 65" x 10.4"
Weight (without stand)		80 lbs.	85 lbs.	94 lbs.
<b>Input Block</b>				
Panel Dimensions (H x W)		35.4" x 55.1"	35.4" x 69.4"	35.4" x 55.1"
Panel Surface		2 (endless type) <small>*One Screen in 4 Screens can also be used as a screen for Projectors.</small>		
Copying Area (H x W)		33.4" x 52.4"	33.4" x 66.6"	33.4" x 52.4"
Scanning System		Contact image sensors		
<b>Output Block</b>				
Printing System		Fusion thermal transfer type		Thermal type
Copy Paper		Standard or recycled paper (60-90 g/m <sup>2</sup> )		
Copy Paper Size		A4 or Letter		
Copy Density		203 dpi (8 dots/mm)		
Copy Color		Black		
Time required for Copying		15 sec./sheet		
Continuous Copies		1 to 9		
Contrast Adjustment		Two levels: Normal/Dark		
2-screen Compressed Copying		Yes		No
<b>System Requirements</b>				
Computer		IBM® PC/AT or compatible machine with a CD-ROM drive		
CPU		Pentium® II or higher processor		
Interface		USB 1.1		
OS		Windows® 98, Windows® Me, Windows® 2000, Windows® XP		
Memory		Windows® 98/Me 64 MB or more Windows® 2000 128 MB or more Windows® XP 256 MB or more		
HD		At least 40 MB free space (except saving space for image file)		
<b>Accessories</b>				
<ul style="list-style-type: none"> <li>• Operating instructions, Installation manual • Power Cord • Markers (black, red and blue, one each) • Eraser (one pc.)</li> <li>• A4 or Letter Size Paper for test (20 sheets) • Thermal Transfer film (10 m) • Software CD-ROM</li> </ul>				
<b>Optional Equipment</b>				
Wall-Mounting Kit		KX-B063		
Stand		KX-B0361		
<b>Separately Available</b>				
Replacement film		UG-6001 (Set of 2 rolls [50m])		
Markers		KX-B031 (set of 10 black markers), KX-B032 (set of 10 red markers), KX-B033 (set of 10 blue markers)		
Erasers		KX-B042 (set of 6 erasers)		
Marker and Eraser Set		KX-B035 (contains 1 black, 1 red and 1 blue markers and 1 eraser)		



UB-5315



UB-5815



UB-7325

Note:  
 • Microsoft and Windows are either registered trademarks or trademarks of Microsoft Corporation in the United States and/or other countries.  
 • Windows® is Microsoft® operating system.  
 • IBM is a registered trademark of International Business Machines Corporation.  
 • Pentium is a registered trademark of Intel Corporation in the U.S. and other countries.  
 • All trademarks referred to in this catalog are property of their respective companies.

www.panasonic.co.panaboard

